



cross-platform LAN controller for entry level solution



MAIN FEATURES

- Operating System: Windows NT or Linux (Unix)
- Up to 24 Cubes
- Unlimited native applications Windows NT or Unix X Window
- Emulated applications through Com.base emulators
- 4 Video Channels (up to 24)
- Video Display any size
- SuperPro version optional
- Upgradable to e-LAN NetGraphic and NetGraphic +

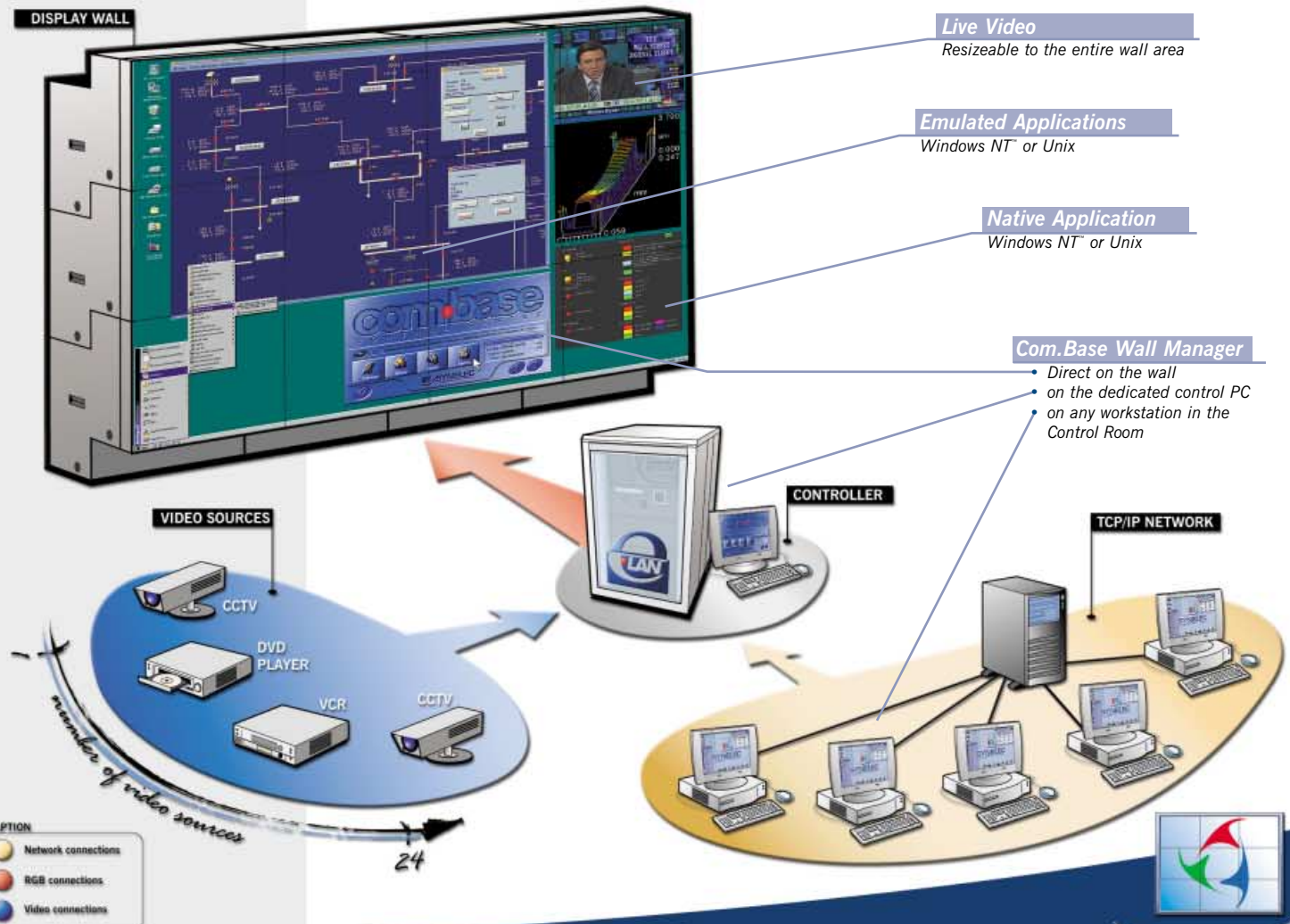
**E-LAN with SIP Technology** is the new line of controllers developed by SYNELEC. These new systems are based on fault tolerant architecture and integrate the ultimate SIP features. **E-LAN SIP** is designed around the concept of **progressive performance**. You can start with the entry level solution and increase the processing capabilities parallel to the growth of your control room requirements (new workstations must be connected, new applications must be displayed, new videos should be available...).

**E-LAN NetWork** is the entry level solution for control rooms where the main requirements are the display of

applications running on the network (Windows NT™ or Unix), such as SCADA, NTM software...

**High performance processing capabilities** combined with 4 video input channels (standard), **e-LAN Network** is the perfect match for small to medium size display wall. Driven by **Com.base** wall manager software, the system is fast to implement, easy to learn and to use. It offers a good mix of control capabilities (remote control, alarm management...).

**E-LAN NetWork** is mainly used in the **energy field** and **small size telecom NOCs** where the "operational side" of the system is the key objective of the customer. ■



**Live Video**  
Resizable to the entire wall area

**Emulated Applications**  
Windows NT™ or Unix

**Native Application**  
Windows NT™ or Unix

**Com.Base Wall Manager**  
• Direct on the wall  
• on the dedicated control PC  
• on any workstation in the Control Room

CAPTION  
 ● Network connections  
 ● RGB connections  
 ● Video connections

display your future



Ref 650154 - v 1.1 - Last Update: March 2002 - Printed in France by Graphi Impression (12) - All trademarks belong to their respective owners - Specifications subject to change without prior notice - Credits: Madrid Metro